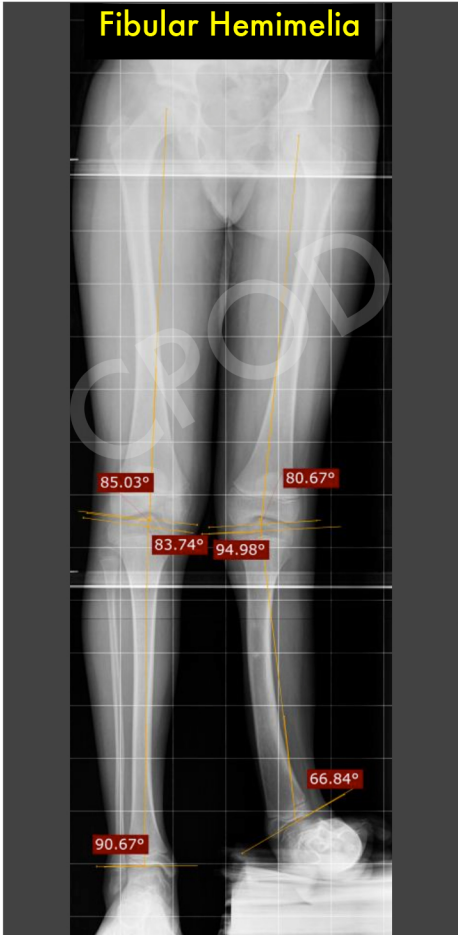
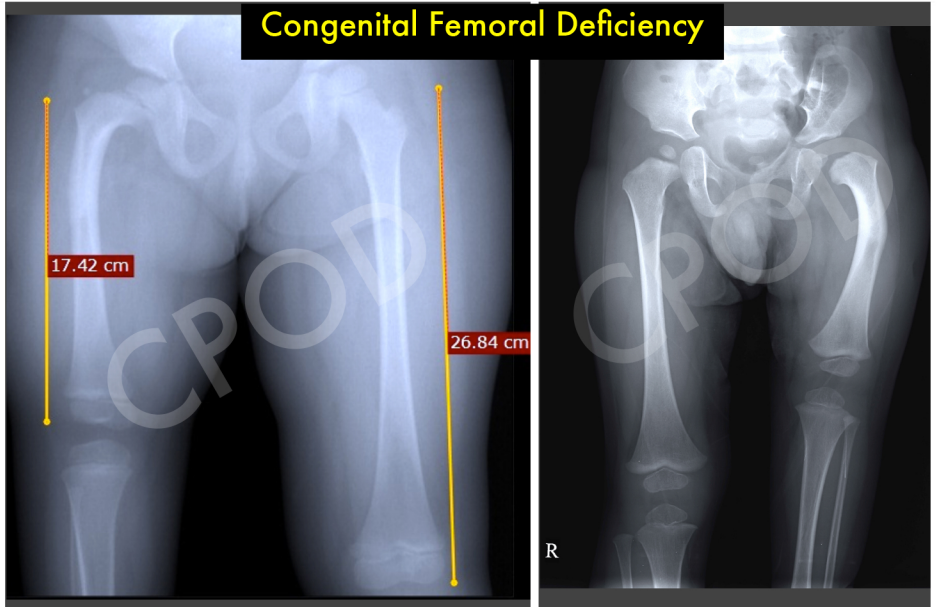


# LIMB DEFICIENCIES & SKELETAL DEFORMITIES

**Fibular Hemimelia**



**Congenital Femoral Deficiency**



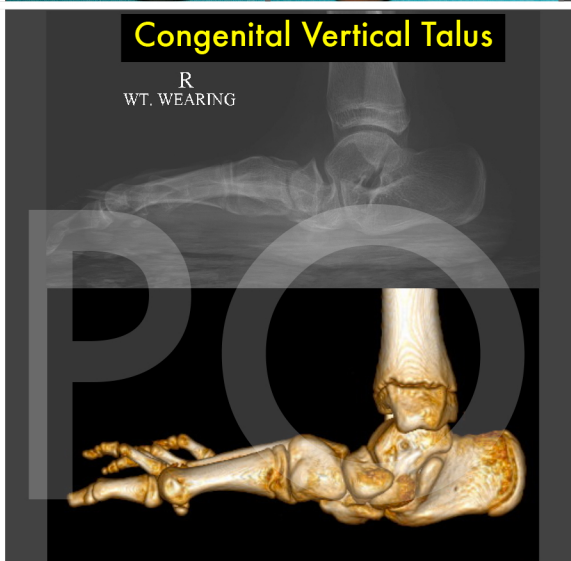
**Radial Clubhand - pre op & post op**



**Tibial Hemimelia**



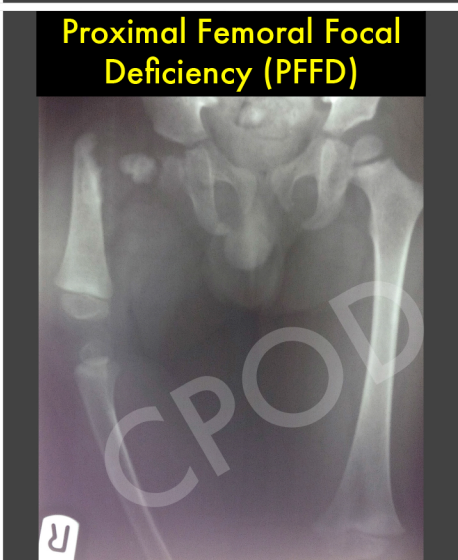
**Congenital Vertical Talus**



**Trevor's disease**



**Proximal Femoral Focal Deficiency (PFFD)**



**Larsen's syndrome**

