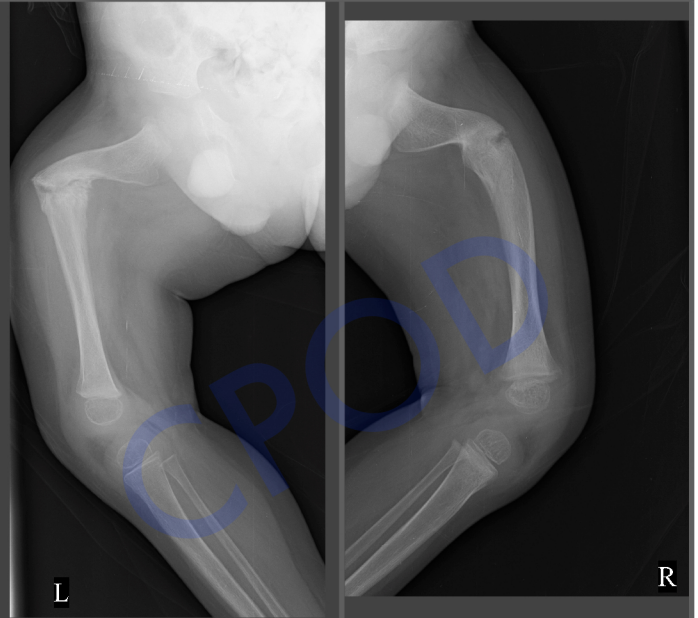
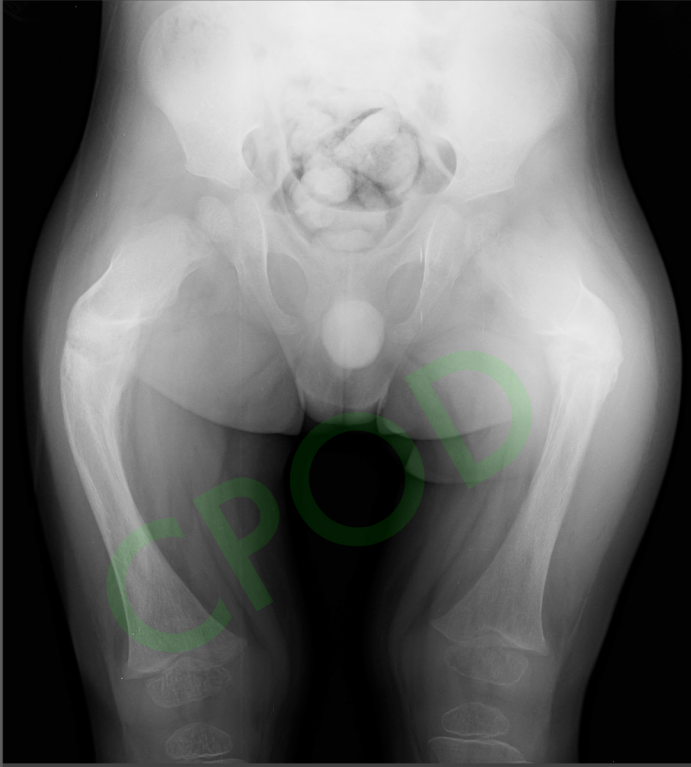


DEFORMITY CORRECTION

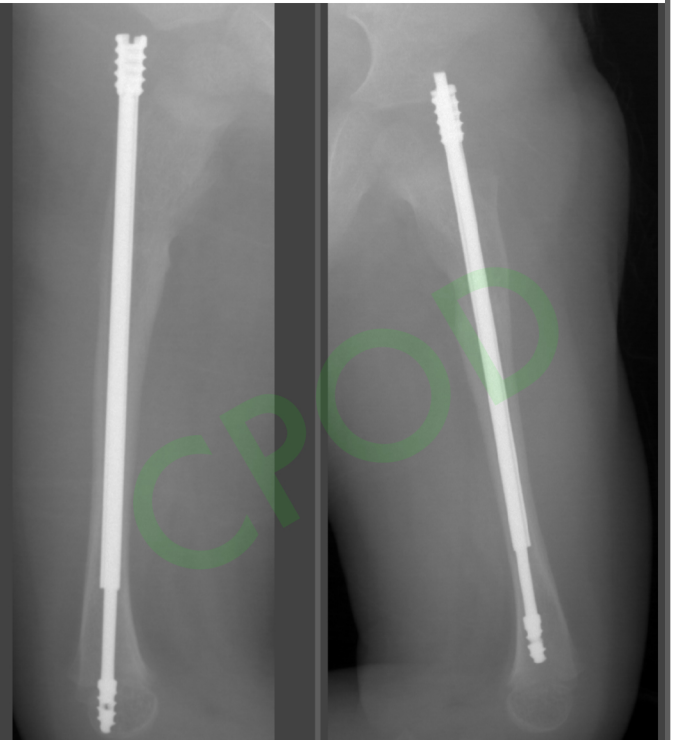


Osteogenesis Imperfecta / Brittle Bone Disease

Characterised by multiple
fractures spontaneously or
following trivial trauma



Stabilised by telescoping rods (growing
rods) after correction of deformity



- Genetic condition
- Defective formation of bone
- Predisposition to fractures
- Severity - ranging from a few to 100s of fractures
- Treatment - Bisphosphonates +
Surgical stabilisation